

Fig. 1. Schematic diagram, showing an isothermal TTT diagram of the formation of austenite. a) Eutectoid steel ( $C = 0.8$ ); b) Hypoeutectoid steel ( $C < 0.8$ ).

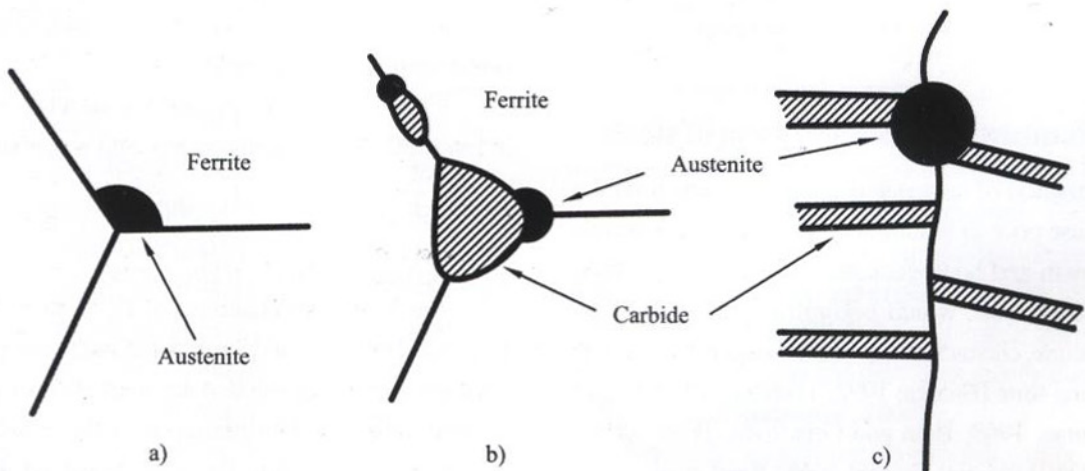


Fig. 2. The preferred nucleation sites for austenite formation from the parent phase of a) pure ferrite, b) ferrite with spheroidized cementite and c) lamellar pearlite.